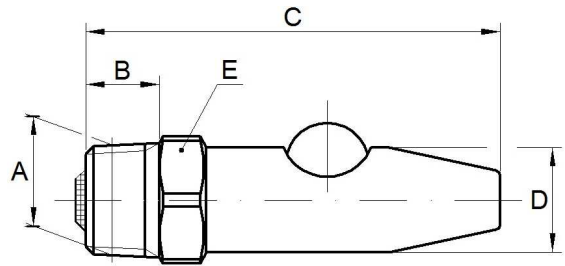


**Bite ball valve for pigs and cattle**  
**Technical specifications**  
**European thread and high pressure**  
**R-HP-SS/BR-SS**

**Recommendations/Definitions**

No. of animals per valve: 10

- R = European pipe thread
- HP = High pressure 200-400 kpa (2-4 bar)
- SS/BR = Stainless steel sleeve and brass body
- SS = Stainless steel sleeve and body



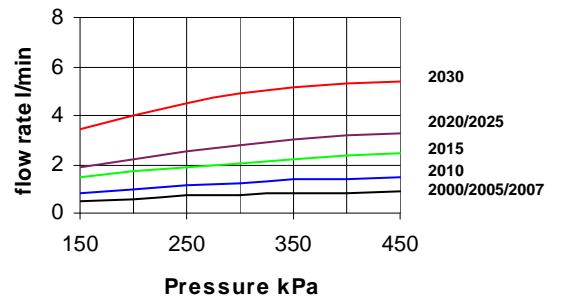
**Measurement/weight**

Part No.		Measure in mm, weight in kg							
SSBR	SS	Description	DN	A	B	C	D	E	Weight
2000	2100	Bite ball valve for piglets	10	R 3/8"	11	61	16	17	0,05
2005	2105	Bite ball valve for piglets	15	R 1/2"	14	66	16	22	0,08
2007	2107	Bite ball valve for piglets - trainer	15	R 1/2"	14	66	16	22	0,08
2010	2110	Bite ball valve for fatteners and calves	15	R 1/2"	14	79	20	22	0,12
2015	2115	Bite ball valve for sow s	15	R 1/2"	14	79	20	22	0,12
2020	2120	Bite ball valve for sow s and young cattle	20	R 3/4"	16	97	25	27	0,22
2025	2125	Bite ball valve for sow s and young cattle	15	R 1/2"	14	94	25	27	0,19
2030	2130	Bite ball valve for beef cattle	25	R 1"	18	115	30	34	0,36

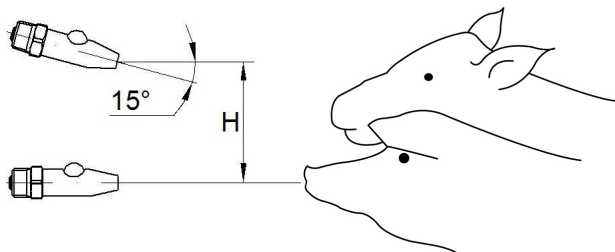
**Flow rate**

1 kPa = 0,01 bar

Pressure	Flow rate l/min								
kPa	2000	2005	2007	2010	2015	2020	2025	2030	
	2100	2105	2107	2110	2115	2120	2125	2130	
150	0,50	0,50	0,50	0,85	1,45	1,85	1,85	3,45	
200	0,60	0,60	0,60	1,00	1,70	2,20	2,20	4,00	
250	0,70	0,70	0,70	1,15	1,90	2,50	2,50	4,50	
300	0,75	0,75	0,75	1,25	2,05	2,75	2,75	4,90	
350	0,80	0,80	0,80	1,35	2,20	3,00	3,00	5,15	
400	0,85	0,85	0,85	1,40	2,35	3,15	3,15	5,30	
450	0,90	0,90	0,90	1,45	2,45	3,30	3,30	5,40	

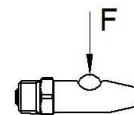


**Installation**



H in mm								
2000	2005	2007	2010	2015	2020	2025	2030	
2100	2105	2107	2110	2115	2120	2125	2130	
50	50	50	100	150	150	150	250	

**Opening force**



Force in N at 300 kPa (1 N = 0,102 kp)								
2000	2005	2007	2010	2015	2020	2025	2030	
2100	2105	2107	2110	2115	2120	2125	2130	
5,0	5,0	5,0	7,5	7,5	11,8	11,8	21,0	