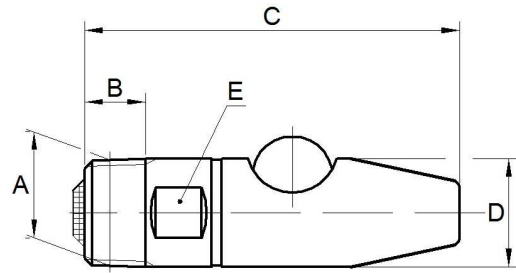


**Bite ball valve for pigs and cattle**  
**Technical specifications**  
**European thread and high pressure**  
**R-HP-SS/OP**

**Recommendations/Definitions**

No. of animals per valve: 10

- R = European pipe thread
- HP = High pressure 200-400 kpa (2-4 bar)
- SS/OP = Stainless steel body one piece



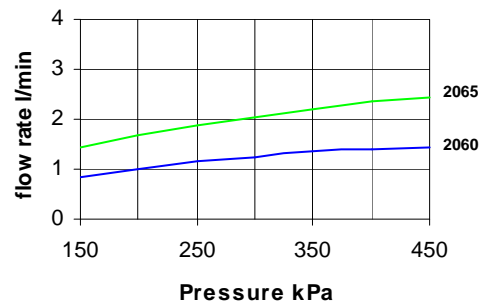
**Measurement/weight**

Part No.	Description	DN	Measure in mm, weight in kg					Weight
			A	B	C	D	E	
2060	Bite ball valve for fatteners and calves	15	R 1/2"	12	74	21	19	0,10
2065	Bite ball valve for sow s	15	R 1/2"	12	74	21	19	0,10

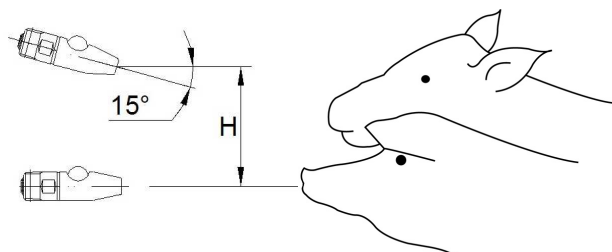
**Flow rate**

1 kPa = 0,01 bar

Pressure kPa	Flow rate l/min	
	2060	2065
150	0,85	1,45
200	1,00	1,70
250	1,15	1,90
300	1,25	2,05
350	1,35	2,20
400	1,40	2,35
450	1,45	2,45

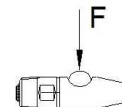


**Installation**



H in mm	
2060	2065
100	150

**Opening force**



Force in N at 300 kPa (1 N = 0,102 kp)	
2060	2065
7,5	7,5